



HANDS ON 2

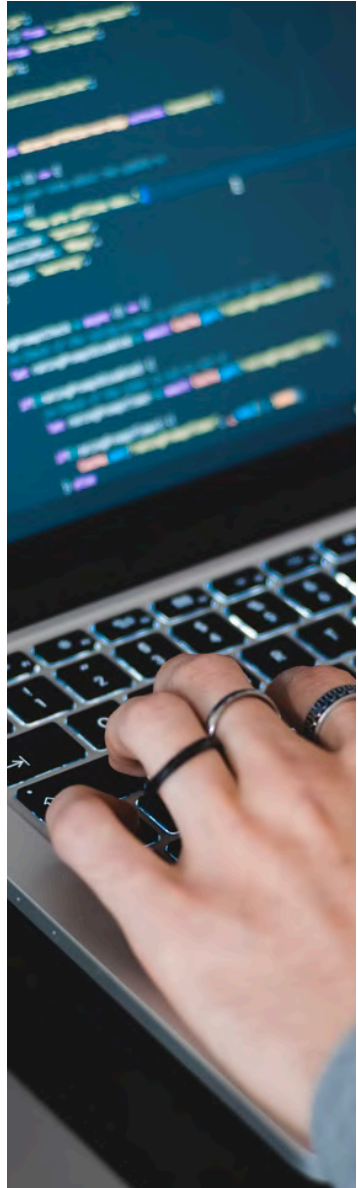


&



Part 1 - Set up Git & GitHub

1. Create a GitHub account
2. Install git on your computer
3. Link git to your GitHub account
4. Create a Personal Access Token on GitHub (PAT)
5. Set up your PAT on your computer



1. Create a GitHub account

- Go to github.com or use this link <https://github.com/join>
- you can have an overview of the process here <https://www.wikihow.com/Create-an-Account-on-GitHub>

2. Install git on your computer

- Type `git --version` and `which git` in your terminal to check if git is already installed.
- If it is not installed, install git on your computer <https://github.com/git-guides/install-git>



3. Link git to your GitHub account

- **Option 1**

- Use the git commands in the Terminal:

```
git config --global user.name 'Alex H'  
git config --global user.email 'alex.herbay@gmail.com'  
git config --global --list
```

The name that will
appear in your commits

The email used for your
GitHub account

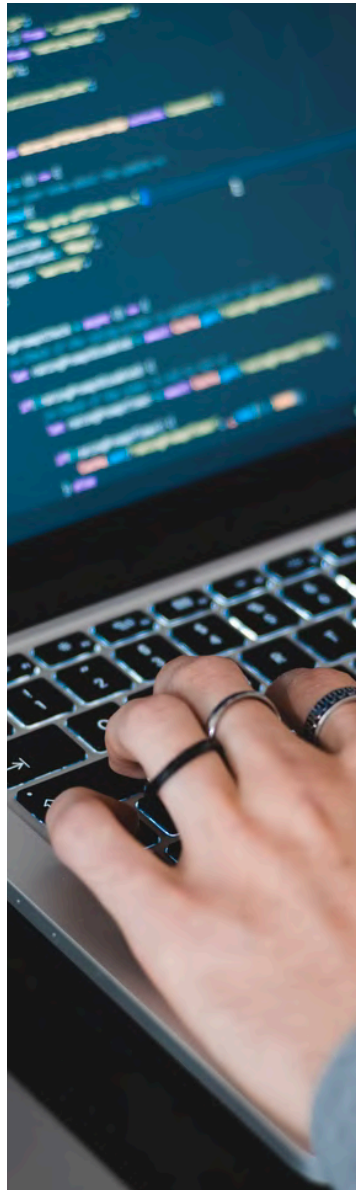
- **Option 2**

- Use the function `use_git_config` from the R package `usethis`
(install it if necessary: `install.packages("usethis")`)

```
library(usethis)  
use_git_config( user.name = "Alex H",  
               user.email = "alex.herbay@gmail.com")
```

The name that will
appear in your
commits

The email used for your
GitHub account

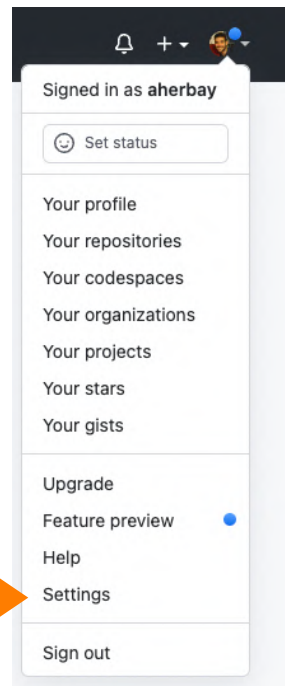


HANDS ON 2 Part 1 - Set up Git & GitHub

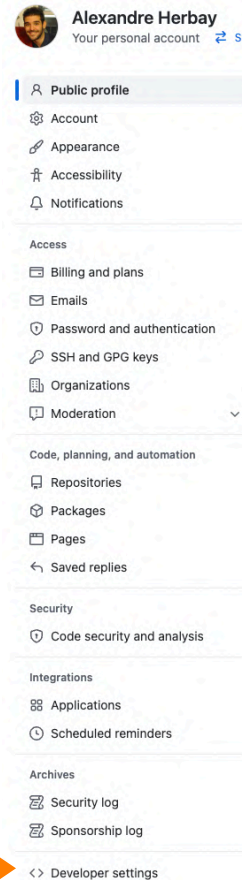
4. Create a Personal Access Token on GitHub (PAT)

- Go to <https://github.com/settings/tokens>
or from the GitHub homepage go to **Settings > Developer settings > Personal access tokens**

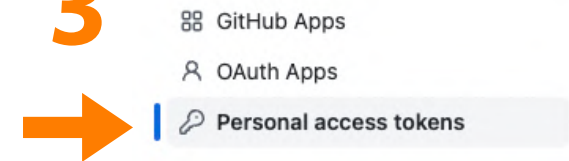
1



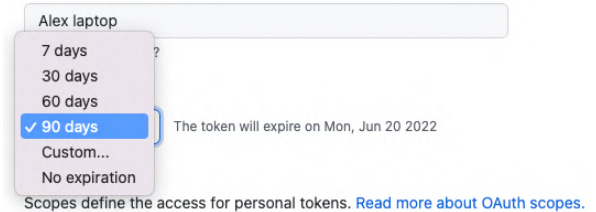
2



3



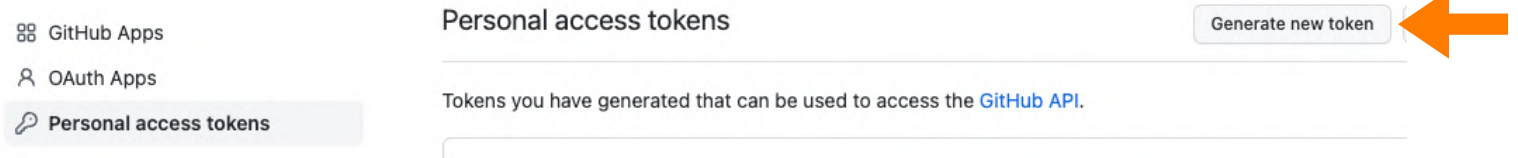
Note



HANDS ON 2 Part 1 - Set up Git & GitHub

4. Create a Personal Access Token on GitHub (PAT)

4 Click on the button 'Generate new token'



5 Indicate the token information

New personal access token

Personal access tokens function like ordinary OAuth access tokens. They can be used instead of a password for Git over HTTPS, or can be used to [authenticate to the API over Basic Authentication](#).

Note

Alex laptop

What's this token for?

A description of the token for yourself

Expiration *

90 days

The token will expire on Mon, Jun 20 2022

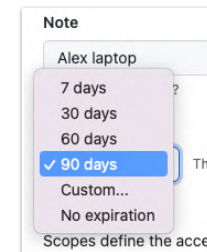
Set an expiration period

Select scopes

Scopes define the access for personal tokens. [Read more about OAuth scopes](#).

- | | | |
|-------------------------------------|-----------------|--------------------------------------|
| <input checked="" type="checkbox"/> | repo | Full control of private repositories |
| <input checked="" type="checkbox"/> | repo:status | Access commit status |
| <input checked="" type="checkbox"/> | repo_deployment | Access deployment status |
| <input checked="" type="checkbox"/> | public_repo | Access public repositories |
| <input checked="" type="checkbox"/> | repo:invite | Access repository invitations |
| <input checked="" type="checkbox"/> | security_events | Read and write security events |

Set the scope of access for the token (minimally check 'repo')



6 Click on the button 'Generate token' at the bottom of the page

Generate token



HANDS ON 2 Part 1 - Set up Git & GitHub

5. Set up your PAT on your computer • Option 1 - Through R Studio

- Use the function `gitcreds_set` from the R package `gitcreds` (install it if necessary: `install.packages("gitcreds")`)

```
gitcreds::gitcreds_set()
```

- When prompted with ? Enter new password or token: paste your token

HANDS ON 2 Part 1 - Set up Git & GitHub

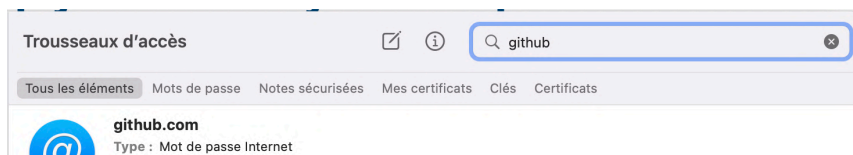
HANDS ON 2

5. Set up your PAT on your computer • Option 2 - Through your OS

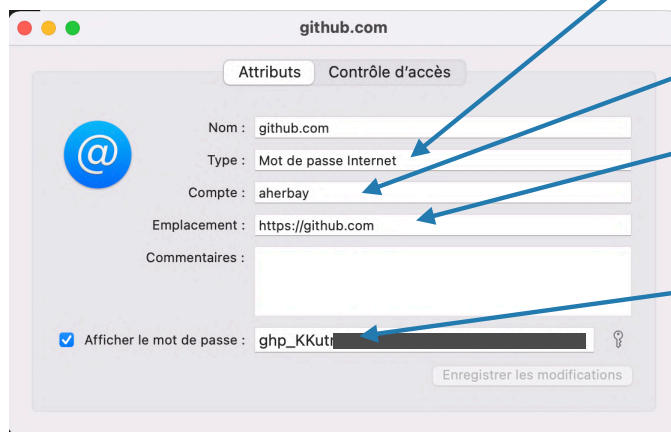


1  Go to Keychain Access

2 Look for "github.com"



3 Adjust the information



It should be Internet Password

Your GitHub username

It has to be <https://github.com>

Copy your Personal Access Token here

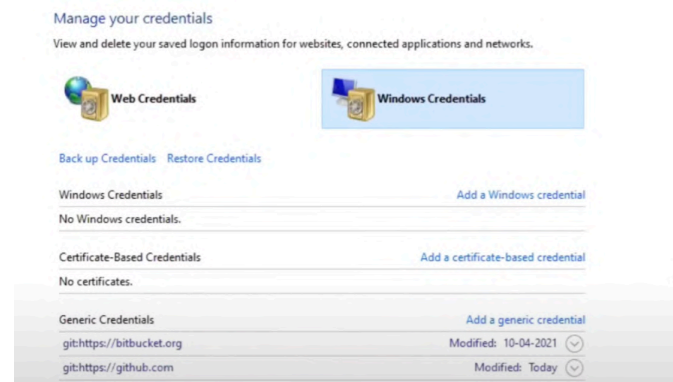
4 Save modifications



Windows

1 Go to Credential Manager

and then Windows Credentials



2 Look for [git:https://github.com](https://github.com)
Click on it and then on Edit